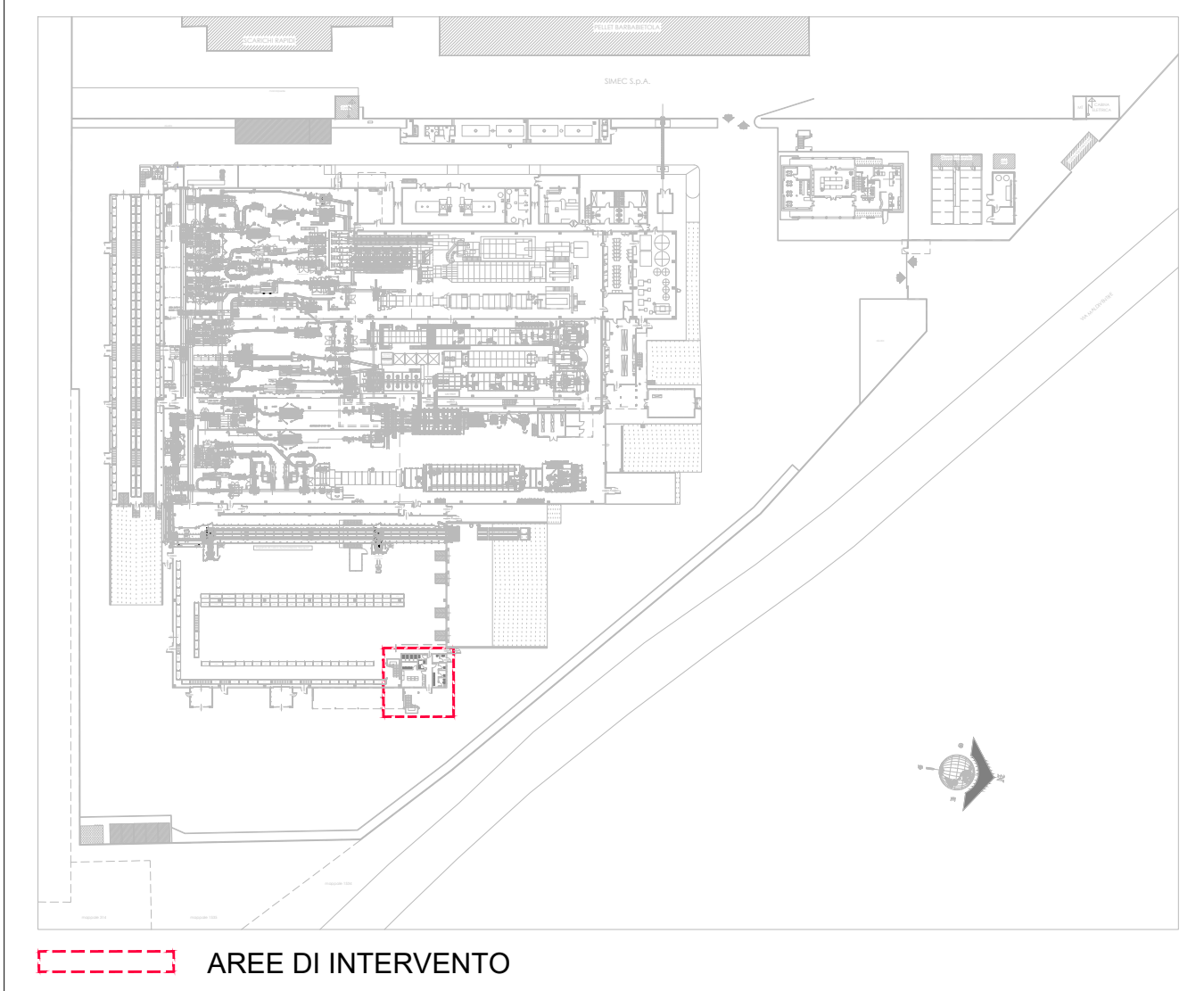
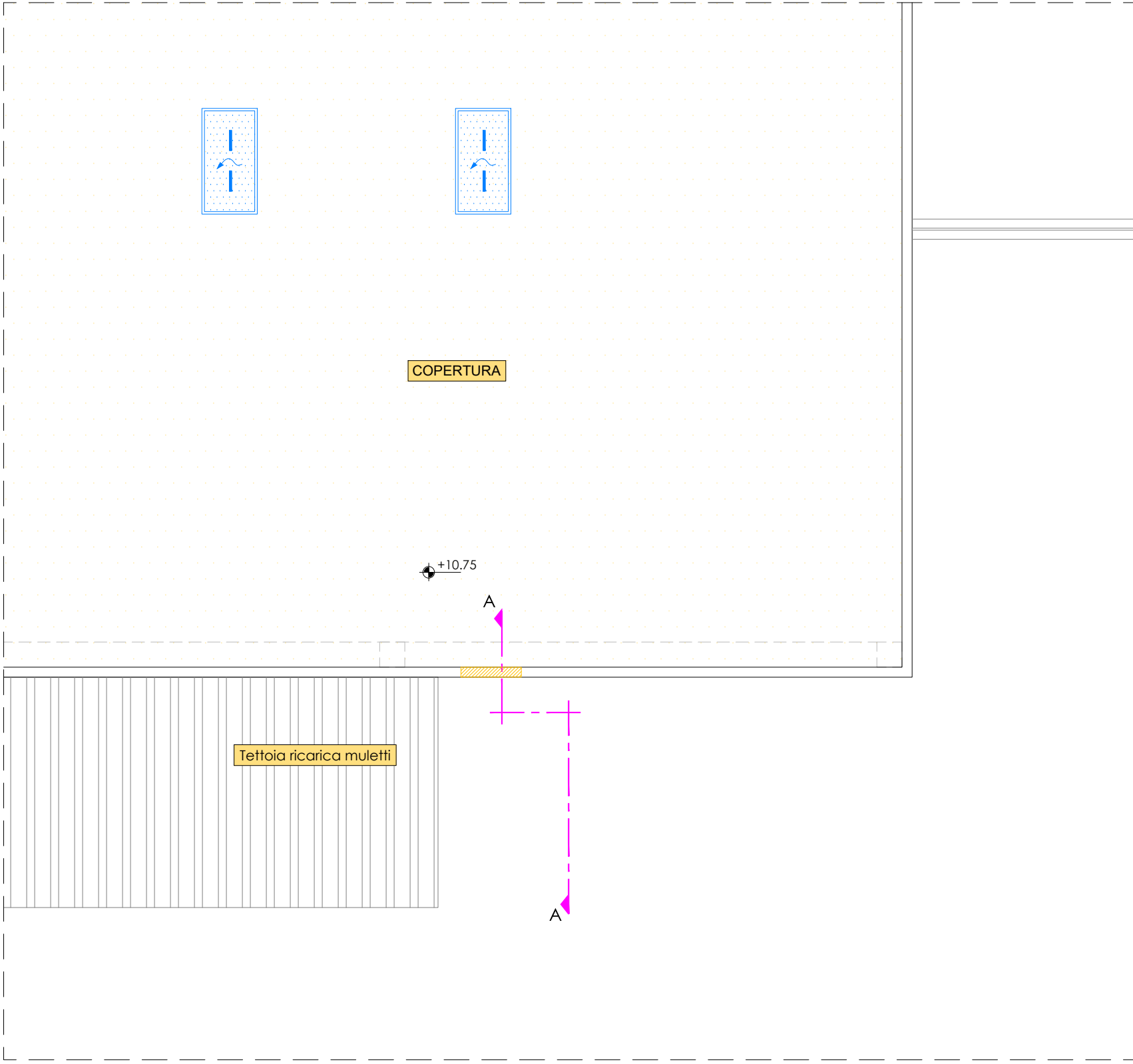
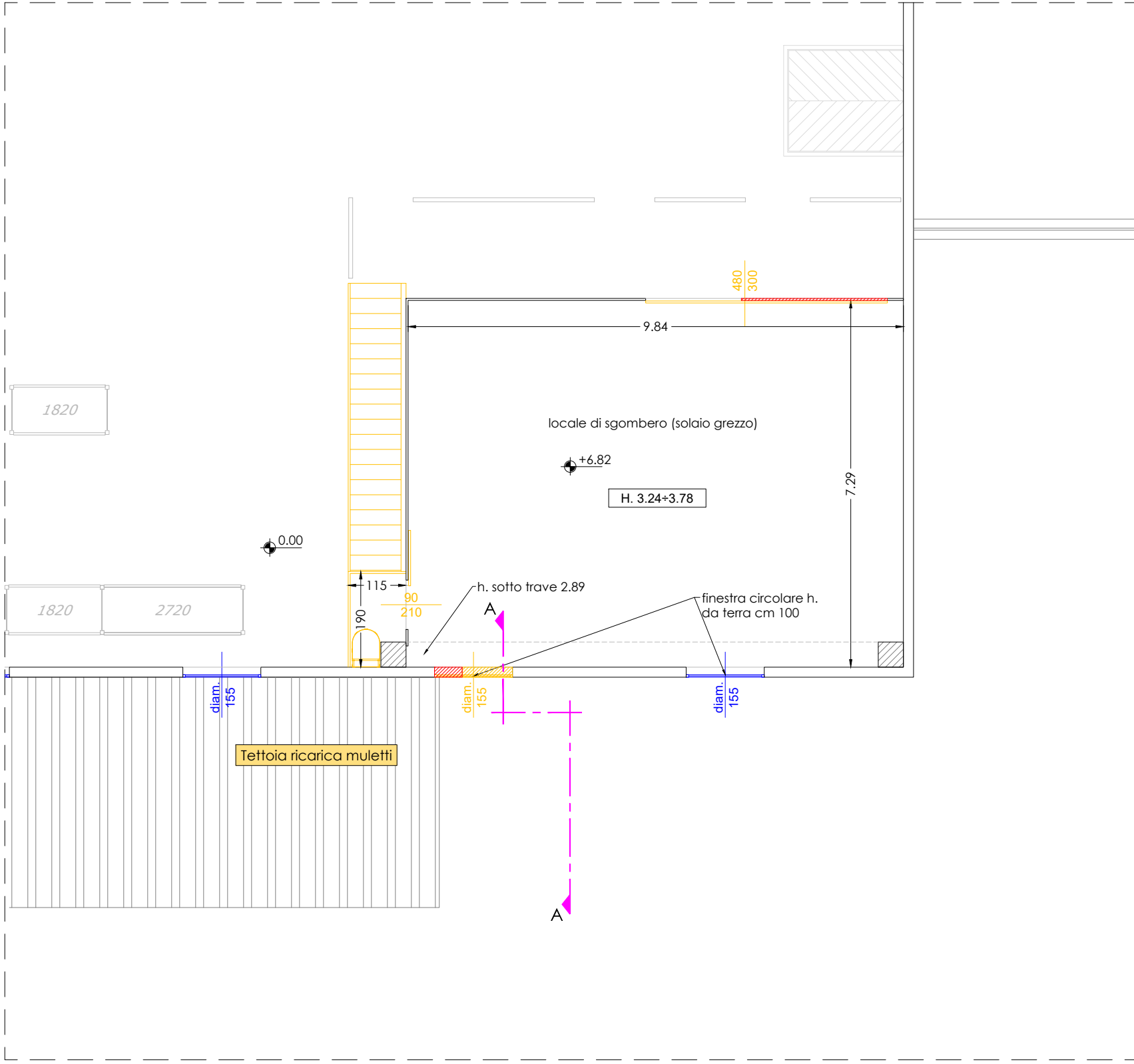
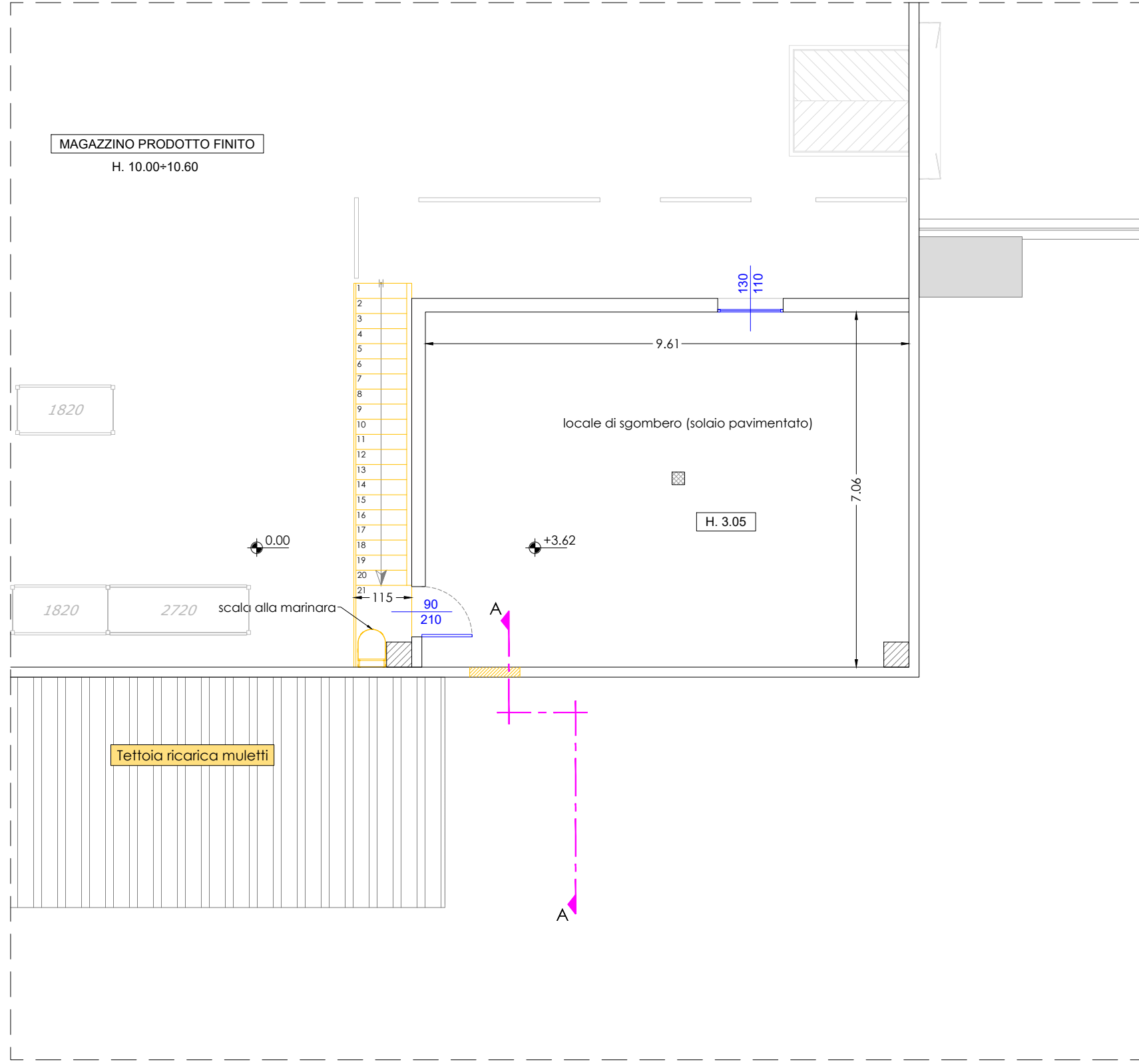
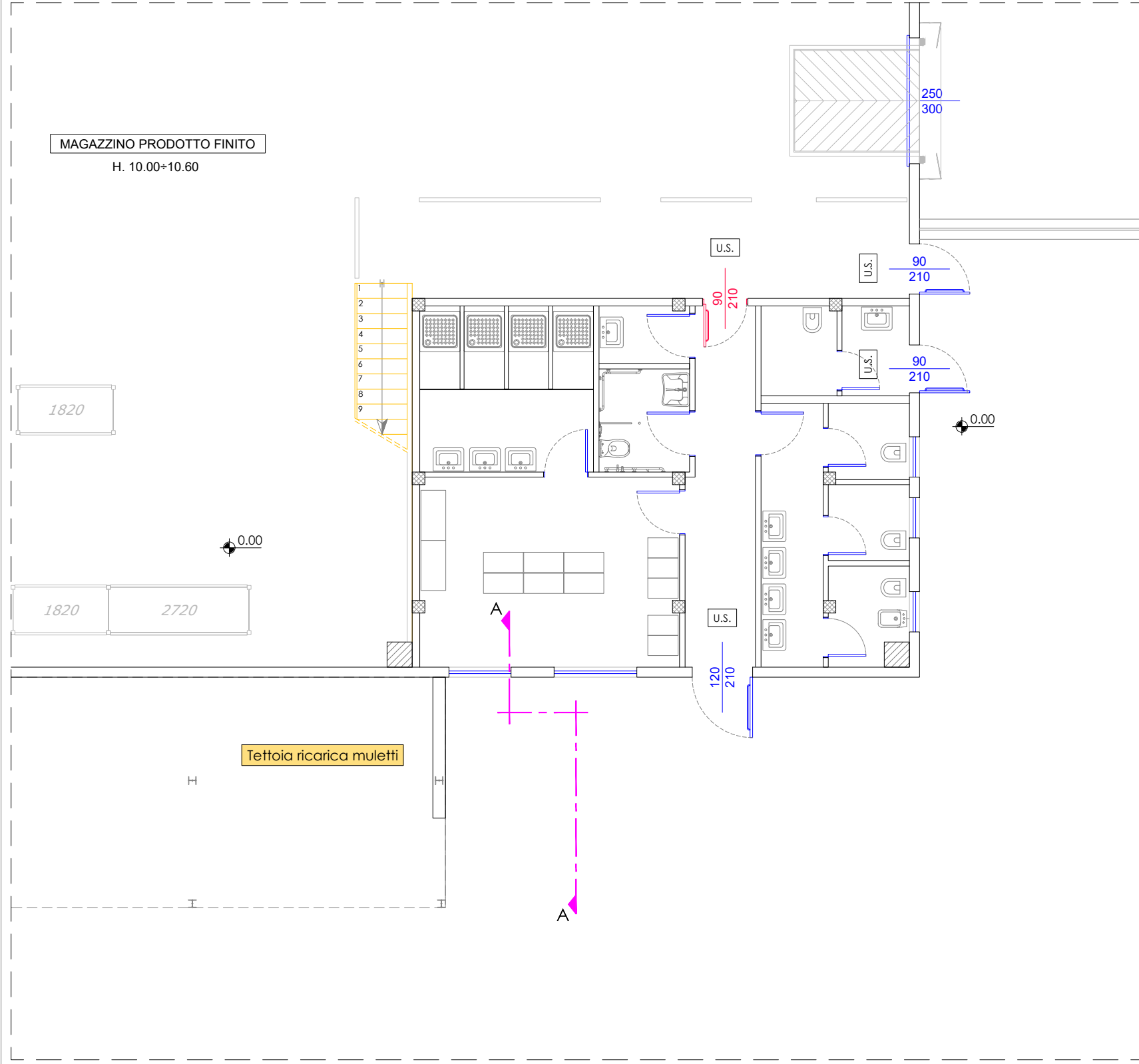
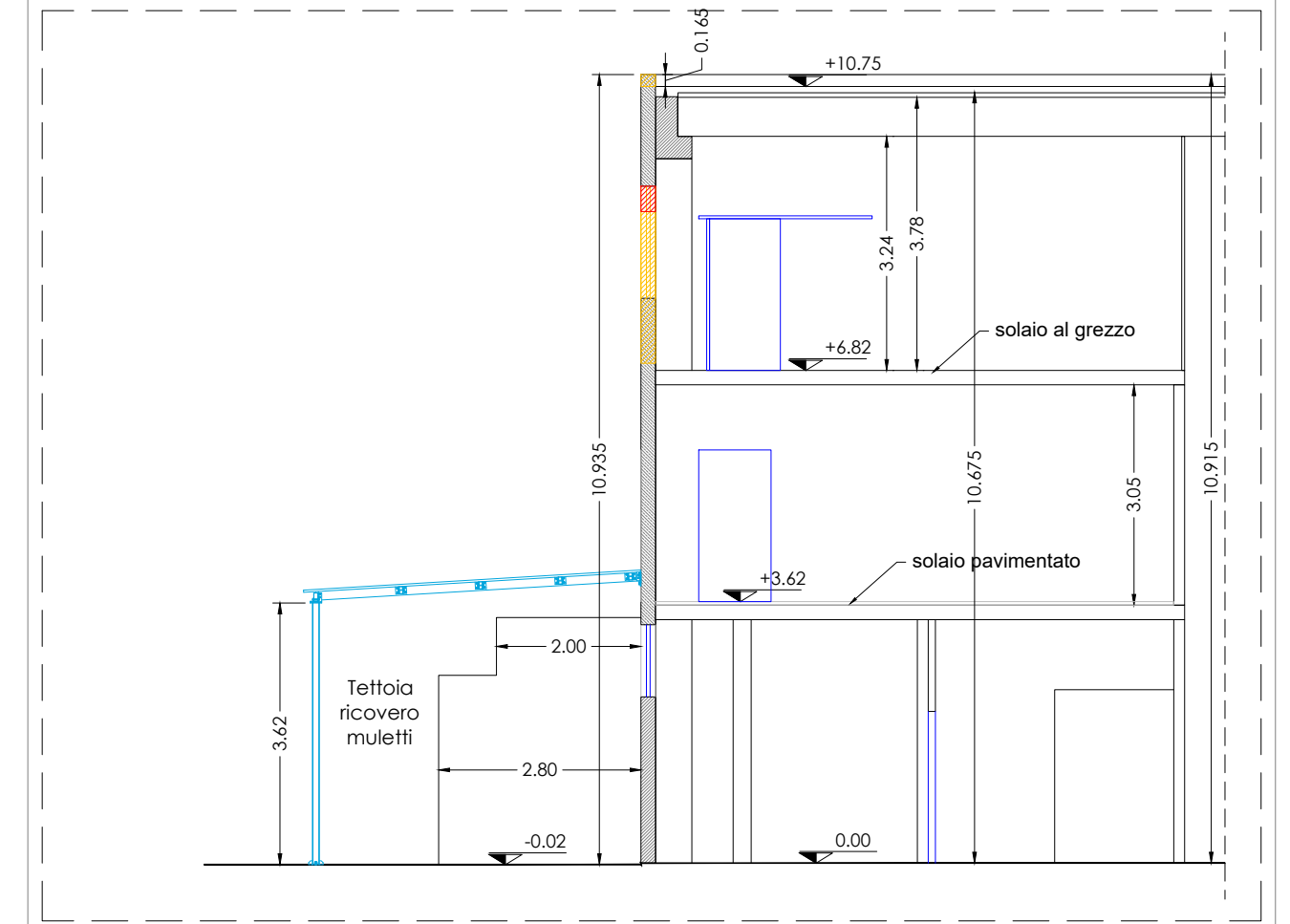


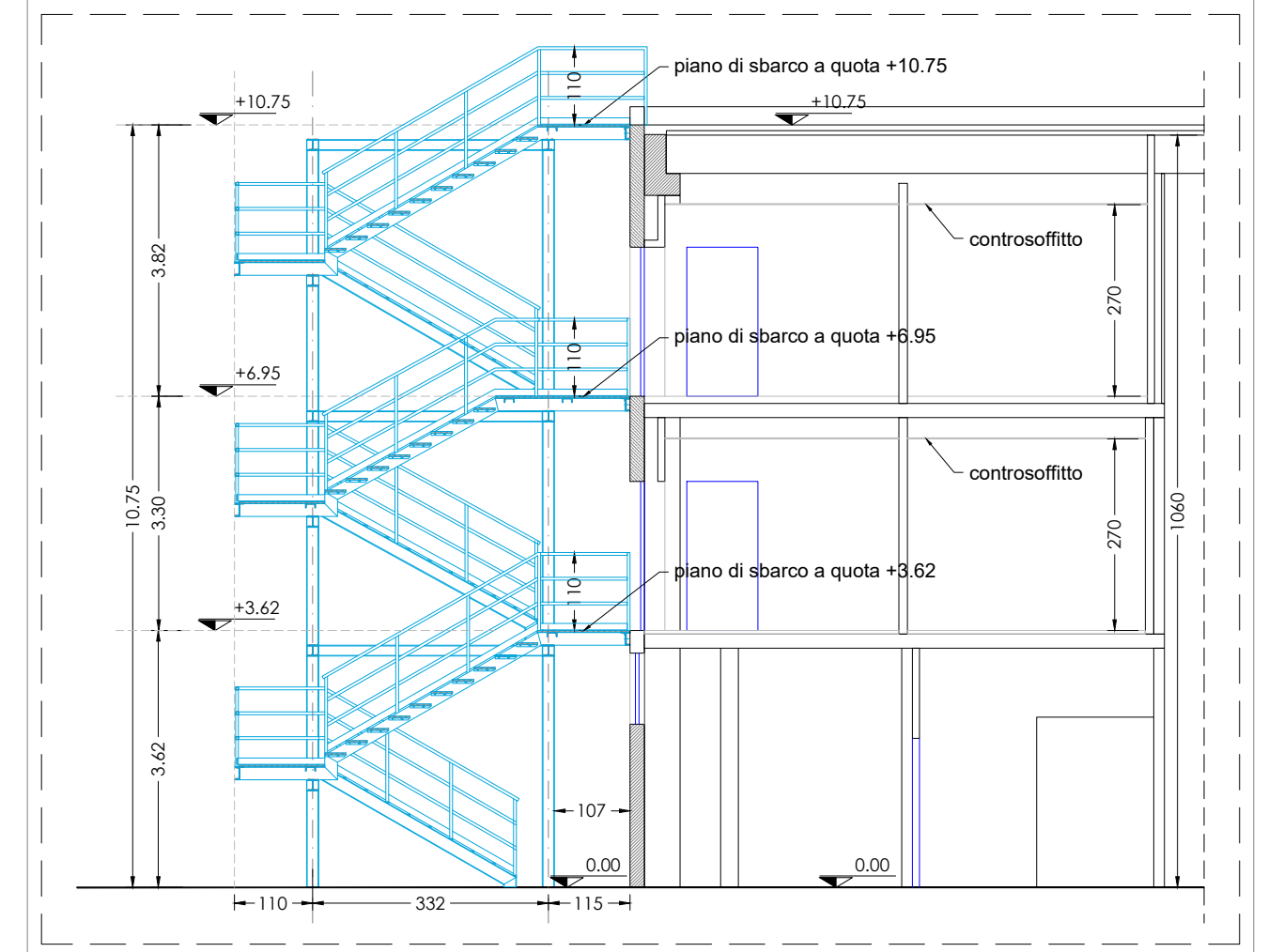
PIANTA PIANO TERRA  
Scala 1:100



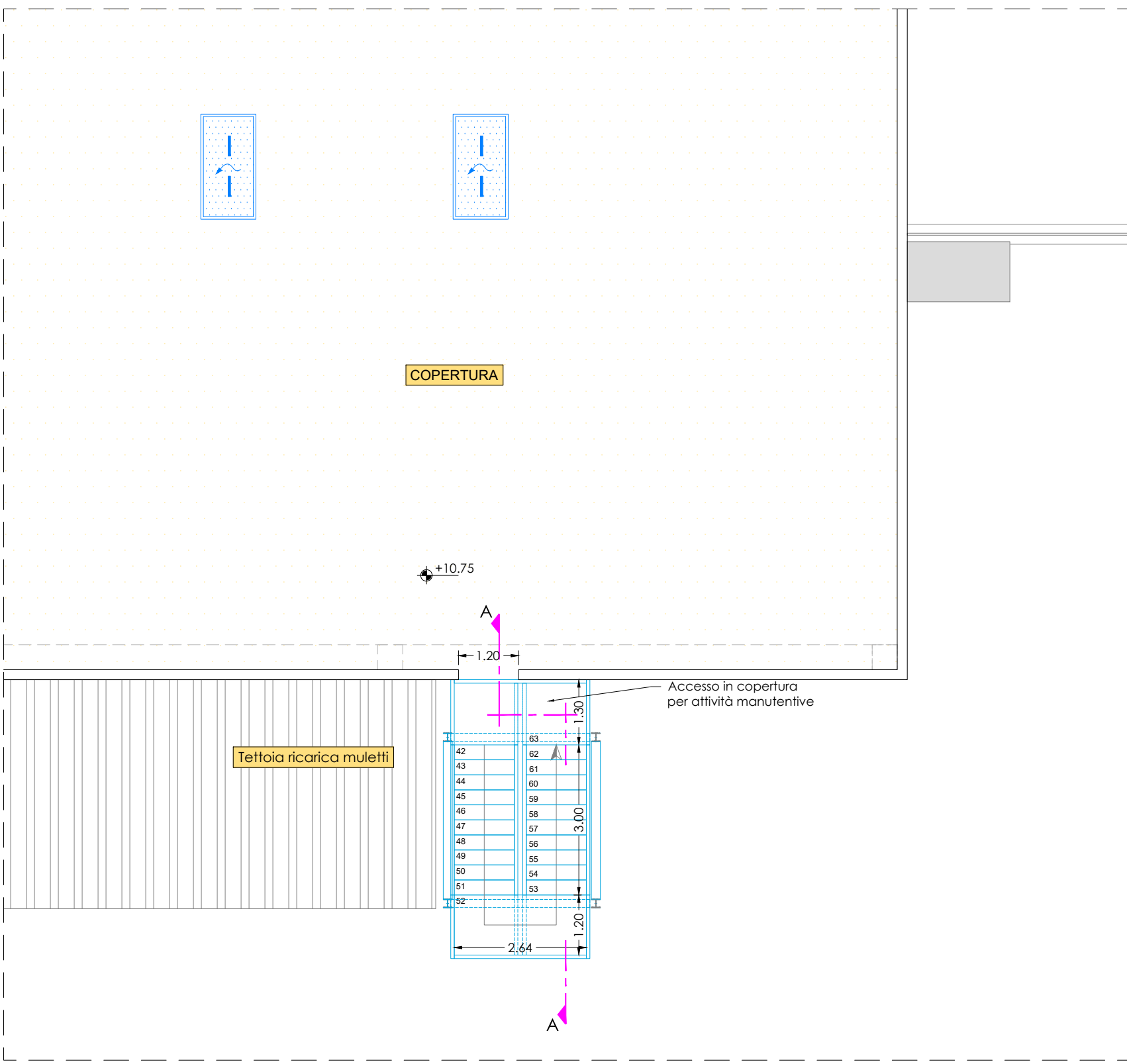
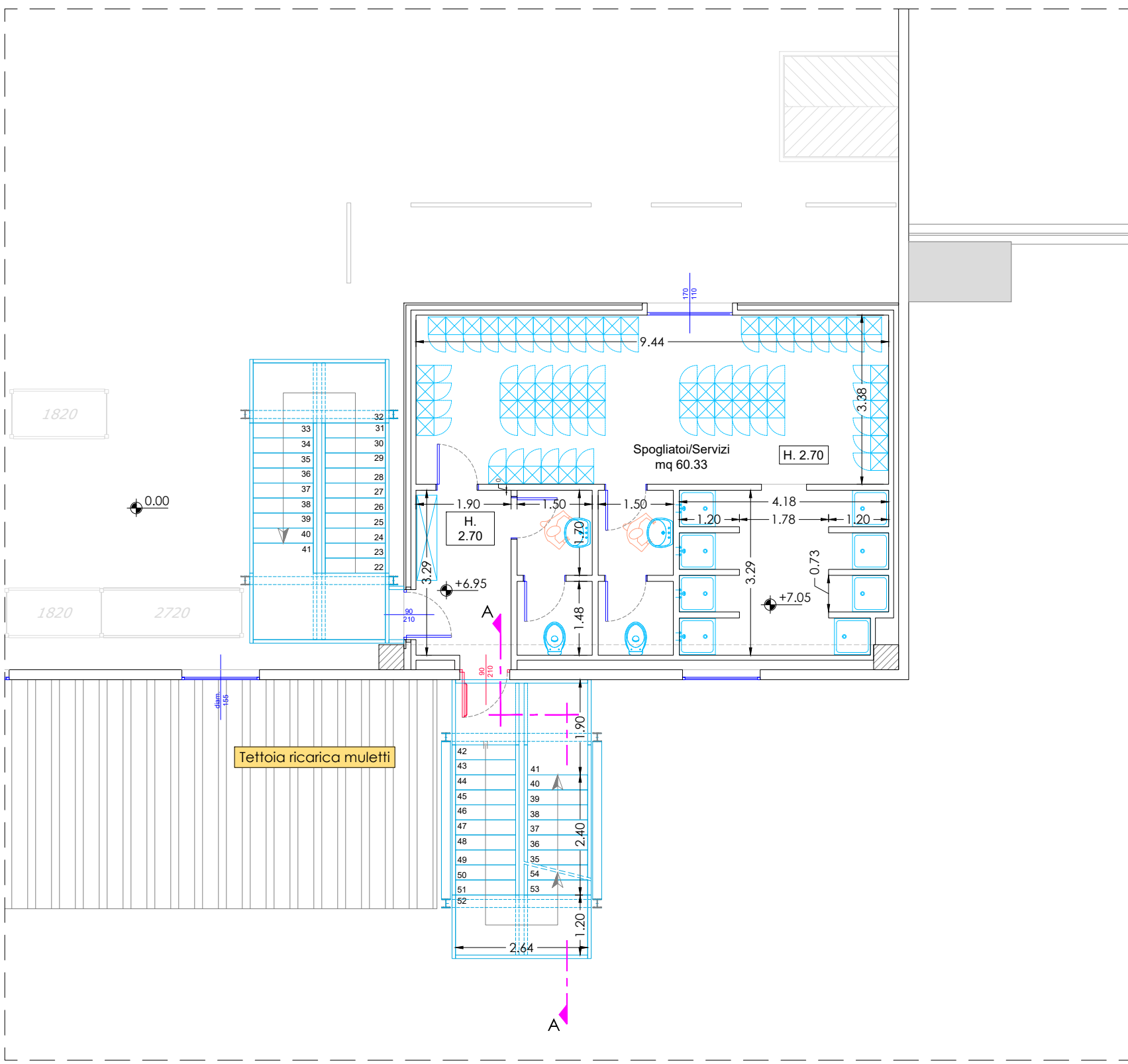
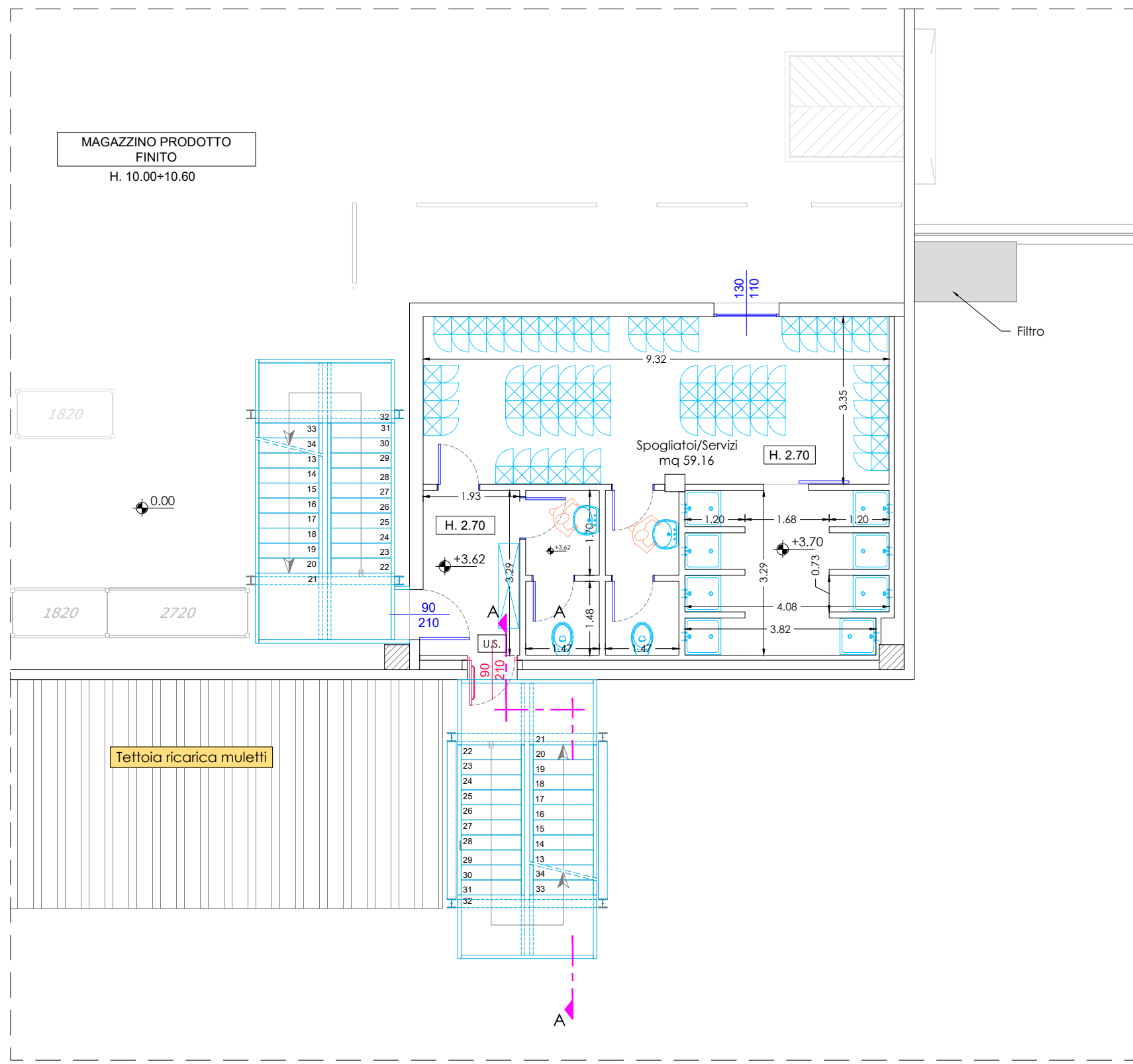
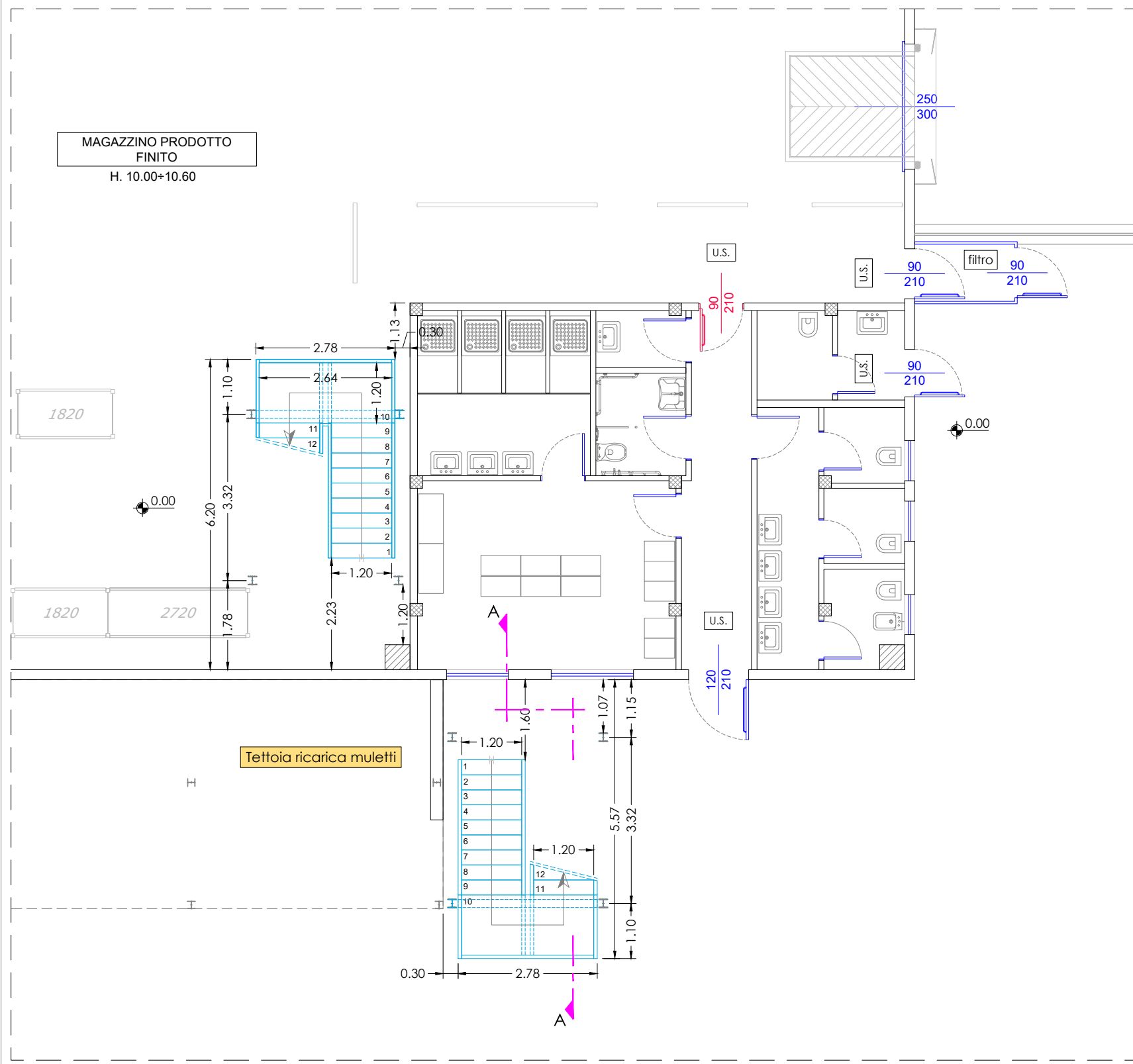
SEZIONE A-A  
Scala 1:100



SEZIONE A-A  
Scala 1:100



PIANTA PIANO TERRA  
Scala 1:100



PRESCRIZIONI PER L'ACCIAIO	
NORMATIVE TECNICHE: LEGGE 05.11.71 N. 1036 N.T.C. 2018	
ACCIAIO PER CAMPESINERIA IN SPESITA' UNO IN 10025-UNO IN 10210-UNO IN 10219	
QUALITA' TECNICA (non diversamente indicati)	UNO IN 10027-1 UN 10200
PROFILO LAMINATO A CALDO PE - AC - UN 91	925/80 F1000
PROFILO LAMINATO A FREDDO TUBULARI	925/80 F1000
PASTIGLIE	925/80 F1000
PROTEZIONE SUPERFICIALE STRUTTURE: ZINCHATURA A CALDO UNO IN 10461	
PROTEZIONE SUPERFICIALE BULLONI: ZINCHATURA A FREDDO	
CLASSE DI ESERCIZIONE (in UN 10900):	
• EXC 1 • EXC2 • EXC3 • EXC4 • EXC5 • EXC6 • EXC7 • EXC8 • EXC9 • EXC10 • EXC11 • EXC12 • EXC13 • EXC14 • EXC15 • EXC16 • EXC17 • EXC18 • EXC19 • EXC20 • EXC21 • EXC22 • EXC23 • EXC24 • EXC25 • EXC26 • EXC27 • EXC28 • EXC29 • EXC30 • EXC31 • EXC32 • EXC33 • EXC34 • EXC35 • EXC36 • EXC37 • EXC38 • EXC39 • EXC40 • EXC41 • EXC42 • EXC43 • EXC44 • EXC45 • EXC46 • EXC47 • EXC48 • EXC49 • EXC50 • EXC51 • EXC52 • EXC53 • EXC54 • EXC55 • EXC56 • EXC57 • EXC58 • EXC59 • EXC60 • EXC61 • EXC62 • EXC63 • EXC64 • EXC65 • EXC66 • EXC67 • EXC68 • EXC69 • EXC70 • EXC71 • EXC72 • EXC73 • EXC74 • EXC75 • EXC76 • EXC77 • EXC78 • EXC79 • EXC80 • EXC81 • EXC82 • EXC83 • EXC84 • EXC85 • EXC86 • EXC87 • EXC88 • EXC89 • EXC90 • EXC91 • EXC92 • EXC93 • EXC94 • EXC95 • EXC96 • EXC97 • EXC98 • EXC99 • EXC100 • EXC101 • EXC102 • EXC103 • EXC104 • EXC105 • EXC106 • EXC107 • EXC108 • EXC109 • EXC110 • EXC111 • EXC112 • EXC113 • EXC114 • EXC115 • EXC116 • EXC117 • EXC118 • EXC119 • EXC120 • EXC121 • EXC122 • EXC123 • EXC124 • EXC125 • EXC126 • EXC127 • EXC128 • EXC129 • EXC130 • EXC131 • EXC132 • EXC133 • EXC134 • EXC135 • EXC136 • EXC137 • EXC138 • EXC139 • EXC140 • EXC141 • EXC142 • EXC143 • EXC144 • EXC145 • EXC146 • EXC147 • EXC148 • EXC149 • EXC150 • EXC151 • EXC152 • EXC153 • EXC154 • EXC155 • EXC156 • EXC157 • EXC158 • EXC159 • EXC160 • EXC161 • EXC162 • EXC163 • EXC164 • EXC165 • EXC166 • EXC167 • EXC168 • EXC169 • EXC170 • EXC171 • EXC172 • EXC173 • EXC174 • EXC175 • EXC176 • EXC177 • EXC178 • EXC179 • EXC180 • EXC181 • EXC182 • EXC183 • EXC184 • EXC185 • EXC186 • EXC187 • EXC188 • EXC189 • EXC190 • EXC191 • EXC192 • EXC193 • EXC194 • EXC195 • EXC196 • EXC197 • EXC198 • EXC199 • EXC200 • EXC201 • EXC202 • EXC203 • EXC204 • EXC205 • EXC206 • EXC207 • EXC208 • EXC209 • EXC210 • EXC211 • EXC212 • EXC213 • EXC214 • EXC215 • EXC216 • EXC217 • EXC218 • EXC219 • EXC220 • EXC221 • EXC222 • EXC223 • EXC224 • EXC225 • EXC226 • EXC227 • EXC228 • EXC229 • EXC230 • EXC231 • EXC232 • EXC233 • EXC234 • EXC235 • EXC236 • EXC237 • EXC238 • EXC239 • EXC240 • EXC241 • EXC242 • EXC243 • EXC244 • EXC245 • EXC246 • EXC247 • EXC248 • EXC249 • EXC250 • EXC251 • EXC252 • EXC253 • EXC254 • EXC255 • EXC256 • EXC257 • EXC258 • EXC259 • EXC260 • EXC261 • EXC262 • EXC263 • EXC264 • EXC265 • EXC266 • EXC267 • EXC268 • EXC269 • EXC270 • EXC271 • EXC272 • EXC273 • EXC274 • EXC275 • EXC276 • EXC277 • EXC278 • EXC279 • EXC280 • EXC281 • EXC282 • EXC283 • EXC284 • EXC285 • EXC286 • EXC287 • EXC288 • EXC289 • EXC290 • EXC291 • EXC292 • EXC293 • EXC294 • EXC295 • EXC296 • EXC297 • EXC298 • EXC299 • EXC300 • EXC301 • EXC302 • EXC303 • EXC304 • EXC305 • EXC306 • EXC307 • EXC308 • EXC309 • EXC310 • EXC311 • EXC312 • EXC313 • EXC314 • EXC315 • EXC316 • EXC317 • EXC318 • EXC319 • EXC320 • EXC321 • EXC322 • EXC323 • EXC324 • EXC325 • EXC326 • EXC327 • EXC328 • EXC329 • EXC330 • EXC331 • EXC332 • EXC333 • EXC334 • EXC335 • EXC336 • EXC337 • EXC338 • EXC339 • EXC340 • EXC341 • EXC342 • EXC343 • EXC344 • EXC345 • EXC346 • EXC347 • EXC348 • EXC349 • EXC350 • EXC351 • EXC352 • EXC353 • EXC354 • EXC355 • EXC356 • EXC357 • EXC358 • EXC359 • EXC360 • EXC361 • EXC362 • EXC363 • EXC364 • EXC365 • EXC366 • EXC367 • EXC368 • EXC369 • EXC370 • EXC371 • EXC372 • EXC373 • EXC374 • EXC375 • EXC376 • EXC377 • EXC378 • EXC379 • EXC380 • EXC381 • EXC382 • EXC383 • EXC384 • EXC385 • EXC386 • EXC387 • EXC388 • EXC389 • EXC390 • EXC391 • EXC392 • EXC393 • EXC394 • EXC395 • EXC396 • EXC397 • EXC398 • EXC399 • EXC400 • EXC401 • EXC402 • EXC403 • EXC404 • EXC405 • EXC406 • EXC407 • EXC408 • EXC409 • EXC410 • EXC411 • EXC412 • EXC413 • EXC414 • EXC415 • EXC416 • EXC417 • EXC418 • EXC419 • EXC420 • EXC421 • EXC422 • EXC423 • EXC424 • EXC425 • EXC426 • EXC427 • EXC428 • EXC429 • EXC430 • EXC431 • EXC432 • EXC433 • EXC434 • EXC435 • EXC436 • EXC437 • EXC438 • EXC439 • EXC440 • EXC441 • EXC442 • EXC443 • EXC444 • EXC445 • EXC446 • EXC447 • EXC448 • EXC449 • EXC450 • EXC451 • EXC452 • EXC453 • EXC454 • EXC455 • EXC456 • EXC457 • EXC458 • EXC459 • EXC460 • EXC461 • EXC462 • EXC463 • EXC464 • EXC465 • EXC466 • EXC467 • EXC468 • EXC469 • EXC470 • EXC471 • EXC472 • EXC473 • EXC474 • EXC475 • EXC476 • EXC477 • EXC478 • EXC479 • EXC480 • EXC481 • EXC482 • EXC483 • EXC484 • EXC485 • EXC486 • EXC487 • EXC488 • EXC489 • EXC490 • EXC491 • EXC492 • EXC493 • EXC494 • EXC495 • EXC496 • EXC497 • EXC498 • EXC499 • EXC500 • EXC501 • EXC502 • EXC503 • EXC504 • EXC505 • EXC506 • EXC507 • EXC508 • EXC509 • EXC510 • EXC511 • EXC512 • EXC513 • EXC514 • EXC515 • EXC516 • EXC517 • EXC518 • EXC519 • EXC520 • EXC521 • EXC522 • EXC523 • EXC524 • EXC525 • EXC526 • EXC527 • EXC528 • EXC529 • EXC530 • EXC531 • EXC532 • EXC533 • EXC534 • EXC535 • EXC536 • EXC537 • EXC538 • EXC539 • EXC540 • EXC541 • EXC542 • EXC543 • EXC544 • EXC545 • EXC546 • EXC547 • EXC548 • EXC549 • EXC550 • EXC551 • EXC552 • EXC553 • EXC554 • EXC555 • EXC556 • EXC557 • EXC558 • EXC559 • EXC560 • EXC561 • EXC562 • EXC563 • EXC564 • EXC565 • EXC566 • EXC567 • EXC568 • EXC569 • EXC570 • EXC571 • EXC572 • EXC573 • EXC574 • EXC575 • EXC576 • EXC577 • EXC578 • EXC579 • EXC580 • EXC581 • EXC582 • EXC583 • EXC584 • EXC585 • EXC586 • EXC587 • EXC588 • EXC589 • EXC590 • EXC591 • EXC592 • EXC593 • EXC594 • EXC595 • EXC596 • EXC597 • EXC598 • EXC599 • EXC600 • EXC601 • EXC602 • EXC603 • EXC604 • EXC605 • EXC606 • EXC607 • EXC608 • EXC609 • EXC610 • EXC611 • EXC612 • EXC613 • EXC614 • EXC615 • EXC616 • EXC617 • EXC618 • EXC619 • EXC620 • EXC621 • EXC622 • EXC623 • EXC624 • EXC625 • EXC626 • EXC627 • EXC628 • EXC629 • EXC630 • EXC631 • EXC632 • EXC633 • EXC634 • EXC635 • EXC636 • EXC637 • EXC638 • EXC639 • EXC640 • EXC641 • EXC642 • EXC643 • EXC644 • EXC645 • EXC646 • EXC647 • EXC648 • EXC649 • EXC650 • EXC651 • EXC652 • EXC653 • EXC654 • EXC655 • EXC656 • EXC657 • EXC658 • EXC659 • EXC660 • EXC661 • EXC662 • EXC663 • EXC664 • EXC665 • EXC666 • EXC667 • EXC668 • EXC669 • EXC670 • EXC671 • EXC672 • EXC673 • EXC674 • EXC675 • EXC676 • EXC677 • EXC678 • EXC679 • EXC680 • EXC681 • EXC682 • EXC683 • EXC684 • EXC685 • EXC686 • EXC687 • EXC688 • EXC689 • EXC690 • EXC691 • EXC692 • EXC693 • EXC694 • EXC695 • EXC696 • EXC697 • EXC698 • EXC699 • EXC700 • EXC701 • EXC702 • EXC703 • EXC704 • EXC705 • EXC706 • EXC707 • EXC708 • EXC709 • EXC710 • EXC711 • EXC712 • EXC713 • EXC714 • EXC715 • EXC716 • EXC717 • EXC718 • EXC719 • EXC720 • EXC721 • EXC722 • EXC723 • EXC724 • EXC725 • EXC726 • EXC727 • EXC728 • EXC729 • EXC730 • EXC731 • EXC732 • EXC733 • EXC734 • EXC735 • EXC736 • EXC737 • EXC738 • EXC739 • EXC740 • EXC741 • EXC742 • EXC743 • EXC744 • EXC745 • EXC746 • EXC747 • EXC748 • EXC749 • EXC750 • EXC751 • EXC752 • EXC753 • EXC754 • EXC755 • EXC756 • EXC757 • EXC758 • EXC759 • EXC760 • EXC761 • EXC762 • EXC763 • EXC764 • EXC765 • EXC766 • EXC767 • EXC768 • EXC769 • EXC770 • EXC771 • EXC772 • EXC773 • EXC774 • EXC775 • EXC776 • EXC777 • EXC778 • EXC779 • EXC780 • EXC781 • EXC782 • EXC783 • EXC784 • EXC785 • EXC786 • EXC787 • EXC788 • EXC789 • EXC790 • EXC791 • EXC792 • EXC793 • EXC794 • EXC795 • EXC796 • EXC797 • EXC798 • EXC799 • EXC800 • EXC801 • EXC802 • EXC803 • EXC804 • EXC805 • EXC806 • EXC807 • EXC808 • EXC809 • EXC810 • EXC811 • EXC812 • EXC813 • EXC814 • EXC815 • EXC816 • EXC817 • EXC818 • EXC819 • EXC820 • EXC821 • EXC822 • EXC823 • EXC824 • EXC825 • EXC826 • EXC827 • EXC828 • EXC829 • EXC830 • EXC831 • EXC832 • EXC833 • EXC834 • EXC835 • EXC836 • EXC837 • EXC838 • EXC839 • EXC840 • EXC841 • EXC842 • EXC843 • EXC844 • EXC845 • EXC846 • EXC847 • EXC848 • EXC849 • EXC850 • EXC851 • EXC852 • EXC853 • EXC854 • EXC855 • EXC856 • EXC857 • EXC858 • EXC859 • EXC860 • EXC861 • EXC862 • EXC863 • EXC864 • EXC865 • EXC866 • EXC867 • EXC868 • EXC869 • EXC870 • EXC871 • EXC872 • EXC873 • EXC874 • EXC875 • EXC876 • EXC877 • EXC878 • EXC879 • EXC880 • EXC881 • EXC882 • EXC883 • EXC884 • EXC885 • EXC886 • EXC887 • EXC888 • EXC889 • EXC890 • EXC891 • EXC892 • EXC893 • EXC894 • EXC895 • EXC896 • EXC897 • EXC898 • EXC899 • EXC900 • EXC901 • EXC902 • EXC903 • EXC904 • EXC905 • EXC906 • EXC907 • EXC908 • EXC909 • EXC910 • EXC911 • EXC912 • EXC913 • EXC914 • EXC915 • EXC916 • EXC917 • EXC918 • EXC919 • EXC920 • EXC921 • EXC922 • EXC923 • EXC924 • EXC925 • EXC926 • EXC927 • EXC928 • EXC929 • EXC930 • EXC931 • EXC932 • EXC933 • EXC934 • EXC935 • EXC936 • EXC937 • EXC938 • EXC939 • EXC940 • EXC941 • EXC942 • EXC943 • EXC944 • EXC945 • EXC946 • EXC947 • EXC948 • EXC949 • EXC950 • EXC951 • EXC952 • EXC953 • EXC954 • EXC955 • EXC956 • EXC957 • EXC958 • EXC959 • EXC960 • EXC961 • EXC962 • EXC963 • EXC964 • EXC965 • EXC966 • EXC967 • EXC968 • EXC969 • EXC970 • EXC971 • EXC972 • EXC973 • EXC974 • EXC975 • EXC976 • EXC977 • EXC978 • EXC979 • EXC980 • EXC981 • EXC982 • EXC983 • EXC984 • EXC985 • EXC986 • EXC987 • EXC988 • EXC989 • EXC990 • EXC991 • EXC992 • EXC993 • EXC994 • EXC995 • EXC996 • EXC997 • EXC998 • EXC999 • EXC1000 • EXC1001 • EXC1002 • EXC1003 • EXC1004 • EXC1005 • EXC1006 • EXC1007 • EXC1008 • EXC1009 • EXC1010 • EXC1011 • EXC1012 • EXC1013 • EXC1014 • EXC1015 • EXC1016 • EXC1017 • EXC1018 • EXC1019 • EXC1020 • EXC1021 • EXC1022 • EXC1023 • EXC1024 • EXC1025 • EXC1026 • EXC1027 • EXC1028 • EXC1029 • EXC1030 • EXC1031 • EXC1032 • EXC1033 • EXC1034 • EXC1035 • EXC1036 • EXC1037 • EXC1038 • EXC1039 • EXC1040 • EXC1041 • EXC1042 • EXC1043 • EXC1044 • EXC1045 • EXC1046 • EXC1047 • EXC1048 • EXC1049 • EXC1050 • EXC1051 • EXC1052 • EXC1053 • EXC1054 • EXC1055 • EXC1056 • EXC1057 • EXC1058 • EXC1059 • EXC1060 • EXC1061 • EXC1062 • EXC1063 • EXC1064 • EXC1065 • EXC1066 • EXC1067 • EXC1068 • EXC1069 • EXC1070 • EXC1071 • EXC1072 • EXC1073 • EXC1074 • EXC1075 • EXC1076 • EXC1077 • EXC1078 • EXC1079 • EXC1080 • EXC1081 • EXC1082 • EXC1083 • EXC1084 • EXC1085 • EXC1086 • EXC1087 • EXC1088 • EXC1089 • EXC1090 • EXC1091 • EXC1092 • EXC1093 • EXC1094 • EXC1095 • EXC1096 • EXC1097 • EXC1098 • EXC1099 • EXC1100 • EXC1101 • EXC1102 • EXC1103 • EXC1104 • EXC1105 • EXC1106 • EXC1107 • EXC1108 • EXC1109 • EXC1110 • EXC1111 • EXC1112 • EXC1113 • EXC1114 • EXC1115 • EXC1116 • EXC1117 • EXC1118 • EXC1119 • EXC1120 • EXC1121 • EXC1122 • EXC1123 • EXC1124 • EXC1125 • EXC1126 • EXC1127 • EXC1128 • EXC1129 • EXC1130 • EXC1131 • EXC1132 • EXC1133 • EXC1134 • EXC1135 • EXC1136 • EXC1137 • EXC1138 • EXC1139 • EXC1140 • EXC1141 • EXC1142 • EXC1143 • EXC1144 • EXC1145 • EXC1146 • EXC1147 • EXC1148 • EXC1149 • EXC1150 • EXC1151 • EXC1152 • EXC1153 • EXC1154 • EXC1155 • EXC1156 • EXC1157 • EXC1158 • EXC1159 • EXC1160 • EXC1161 • EXC1162 • EXC1163 • EXC1164 • EXC1165 • EXC1166 • EXC1167 • EXC1168 • EXC1169 • EXC1170 • EXC1171 • EXC1172 • EXC1173 • EXC1174 • EXC1175 • EXC1176 • EXC1177 • EXC1178 • EXC1179 • EXC1180 • EXC1181 • EXC1182 • EXC1183 • EXC1184 • EXC1185 • EXC1186 • EXC1187 • EXC1188 • EXC1189 • EXC1190 • EXC1191 • EXC1192 • EXC1193 • EXC1194 • EXC1195 • EXC1196 • EXC1197 • EXC1198 • EXC1199 • EXC1200 • EXC1201 • EXC1202 • EXC1203 • EXC1204 • EXC1205 • EXC1206 • EXC1207 • EXC1208 • EXC1209 • EXC1210 • EXC1211 • EXC1212 • EXC1213 • EXC1214 • EXC1215 • EXC1216 • EXC1217 • EXC1218 • EXC1219 • EXC1220 • EXC1221 • EXC1222 • EXC1223 • EXC1224 • EXC1225 • EXC1226 • EXC1227 • EXC1228 • EXC1229 • EXC1230 • EXC1231 • EXC1232 • EXC1233 • EXC1234 • EXC1235 • EXC1236 • EXC1237 • EXC1238 • EXC1239 • EXC1240 • EXC1241 • EXC1242 • EXC1243 • EXC1244 • EXC1245 • EXC1246 • EXC1247 • EXC1248 • EXC1249 • EXC1250 • EXC1251 • EXC1252 • EXC1253 • EXC1254 • EXC1255 • EXC1256 • EXC1257 • EXC1258 • EXC1259 • EXC1260 • EXC1261 • EXC1262 • EXC1263 • EXC1264 • EXC1265 • EXC1266 • EXC1267 • EXC1268 • EXC1269 • EXC1270 • EXC1271 • EXC1272 • EXC1273 • EXC1274 • EXC1275 • EXC1276 • EXC1277 • EXC1278 • EXC1279 • EXC1280 • EXC1281 • EXC1282 • EXC1283 • EXC1284 • EXC1285 • EXC1286 • EXC1287 • EXC1288 • EXC1289 • EXC1290 • EXC1291 • EXC1292 • EXC1293 • EXC1294 • EXC1295 • EXC1296 • EXC1297 • EXC1298 • EXC1299 • EXC1300 • EXC1301 • EXC1302 • EXC1303 • EXC1304 • EXC1305 • EXC1306 • EXC1307 • EXC1308 • EXC1309 • EXC1310 • EXC1311 • EXC1312 • EXC1313 • EXC1314 • EXC1315 • EXC1316 • EXC1317 • EXC1318 • EXC1319 • EXC1320 • EXC1321 • EXC1322 • EXC1323 • EXC1324 • EXC1325 • EXC1326 • EXC1327 • EXC1328 • EXC1329 • EXC1330 • EXC1331 • EXC1332 • EXC1333 • EXC1334 • EXC1335 • EXC1336 • EXC1337 • EXC1338 • EXC1339 • EXC1340 • EXC1341 • EXC1342 • EXC1343 • EXC1344 • EXC1345 • EXC1346 • EXC1347 • EXC1348 • EXC1349 • EXC1350 • EXC1351 • EXC1352 • EXC1353 • EXC1354 • EXC1355 • EXC1356 • EXC1357 • EXC1358 • EXC1359 • EXC1360 • EXC1361 • EXC1362 • EXC1363 • EXC1364 • EXC1365 • EXC1366 • EXC1367 • EXC1368 • EXC1369 • EXC1370 • EXC1371 • EXC1372 • EXC1373 • EXC1374 • EXC1375 • EXC1376 • EXC1377 • EXC1378 • EXC1379 • EXC1380 • EXC1381 • EXC1382 • EXC1383 • EXC1384 • EXC1385 • EXC1386 • EXC1387 • EXC1388 • EXC1389 • EXC1390 • EXC1391 • EXC1392 • EXC1393 • EXC1394 • EXC1395 • EXC1396 • EXC1397 • EXC1398 • EXC1399 • EXC1400 • EXC1401 • EXC1402 • EXC1403 • EXC1404 • EXC1405 • EXC1406 • EXC1407 • EXC1408 • EXC1409 • EXC1410 • EXC1411 • EXC1412 • EXC1413 • EXC1414 • EXC1415 • EXC1416 • EXC1417 • EXC1418 • EXC1419 • EXC1420 • EXC1421 • EXC1422 • EXC1423 • EXC1424 • EXC1425 • EXC1426 • EXC1427 • EXC1428 • EXC1429 • EXC1430 • EXC1431 • EXC1432 • EXC1433 • EXC1434 • EXC1435 • EXC1436 • EXC1437 • EXC1438 • EXC1439 • EXC1440 • EXC1441 • EXC1442 • EXC1443 • EXC1444 • EXC1445 • EXC1446 • EXC1447 • EXC1448 • EXC1449 • EXC1450 • EXC1451 • EXC1452 • EXC1453 • EXC1454 • EXC1455 • EXC1456 • EXC1457 • EXC1458 • EXC1459 • EXC1460 • EXC1461 • EXC1462 • EXC1463 • EXC1464 • EXC1465 • EXC1466 • EXC1467 • EXC1468 • EXC1469 • EXC1470 • EXC1471 • EXC1472 • EXC1473 • EXC1474 • EXC1475 • EXC1476 • EXC1477 • EXC1478 • EXC1479 • EXC1480 • EXC1481 • EXC1482 • EXC1483 • EXC1484 • EXC1485 • EXC1486 • EXC1487 • EXC1488 • EXC1489 • EXC1490 • EXC1491 • EXC1492 • EXC1493 • EXC1494 • EXC1495 • EXC1496 • EXC1497 • EXC1498 • EXC1499 • EXC1500 • EXC1501 • EXC1502 • EXC1503 • EXC1504 • EXC1505 • EXC1506 • EXC1507 • EXC1508 • EXC1509 • EXC1510 • EXC1511 • EXC1512 • EXC1513 • EXC1514 • EXC1515 • EXC1516 • EXC1517 • EXC1518 • EXC1519 • EXC1520 • EXC1521 • EXC1522 • EXC1523 • EXC1524 • EXC1525 • EXC1526 • EXC1527 • EXC1528 • EXC1529 • EXC1530 • EXC1531 • EXC1532 • EXC1533 • EXC1534 • EXC1535 • EXC1536 • EXC1537 • EXC1538 • EXC1539 • EXC1540 • EXC1541 • EXC1542 • EXC1543 • EXC1544 • EXC1545 • EXC1546 • EXC1547 • EXC1548 • EXC1549 • EXC1550 • EXC1551 • EXC1552 • EXC1553 • EXC1554 • EXC1555 • EXC1556 • EXC1557 • EXC1558 • EXC1559 • EXC1560 • EXC1561 • EXC1562 • EXC1563 • EXC1564 • EXC1565 • EXC1566 • EXC1567 • EXC1568 • EXC1569 • EXC1570 • EXC1571 • EXC1572 • EXC1573 • EXC1574 • EXC1575 • EXC1576 • EXC1577 • EXC1578 • EXC1579 • EXC1580 • EXC1581 • EXC1582 • EXC1583 • EXC1584 • EXC1585 • EXC1586 • EXC1587 • EXC1588 • EXC1589 • EXC1590 • EXC1591 • EXC1592 • EXC1593 • EXC1594 • EXC1595 • EXC1596 • EXC1597 • EXC1598 • EXC1599 • EXC1600 • EXC1601 • EXC1602 • EXC1603 • EXC1604 • EXC1605 • EXC1606 • EXC1607 • EXC1608 • EXC1609 • EXC1610 • EXC1611 • EXC1612 • EXC1613 • EXC1614 • EXC1615 • EXC1616 • EXC1617 • EXC1618 • EXC1619 • EXC1620 • EXC1621 • EXC1622 • EXC1623 • EXC1624 • EXC1625 • EXC1626 • EXC1627 • EXC1628 • EXC1629 • EXC1630 • EXC1631 • EXC1632 • EXC1633 • EXC1634 • EXC1635 • EXC1636 • EXC1637 • EXC1638 • EXC1639 • EXC1640 • EXC1641 • EXC1642 • EXC1643 • EXC1644 • EXC1645 • EXC1646 • EXC1647 • EXC1648 • EXC1649 • EXC1650 • EXC1651 • EXC1652 • EXC1653 • EXC1654 • EXC1655 • EXC1656 • EXC1657 • EXC1658 • EXC1659 • EXC1660 • EXC1661 • EXC1662 • EXC1663 • EXC1664 • EXC1665 • EXC1666 • EXC1667 • EXC1668 • EXC1669 • EXC1670 • EXC1671 • EXC1672 • EXC1673 • EXC1674 • EXC1675 • EXC1676 • EXC1677 • EXC1678 • EXC1679 • EXC1680 • EXC1681 • EXC1682 • EXC1683 • EXC1684 • EXC1685 • EXC1686 • EXC1687 • EXC1688 • EXC1689 • EXC1690 • EXC1691 • EXC1692 • EXC1693 • EXC1694 • EXC1695 • EXC1696 • EXC1697 • EXC1698 • EXC1699 • EXC1700 • EXC1701 • EXC1702 • EXC1703 • EXC1704 • EXC1705 • EXC1706 • EXC1707 • EXC1708 • EXC1709 • EXC1710 • EXC1711 • EXC1712 • EXC1713 • EXC1714 • EXC1715 • EXC1716 • EXC1717 • EXC1718 • EXC1719 • EXC1720 • EXC1721 • EXC1722 • EXC1723 • EXC1724 • EXC1725 • EXC1726 • EXC1727 • EXC1728 • EXC1729 • EXC1730 • EXC1731 • EXC1732 • EXC1733 • EXC1734 • EXC1735 • EXC1736 • EXC1737 • EXC1738 • EXC1739 • EXC1740 • EXC1741 • EXC1742 • EXC1743 • EXC1744 • EXC1745 • EXC1746 • EXC1747 • EXC1748 • EXC1749 • EXC1750 • EXC1751 • EXC1752 • EXC1753 • EXC1754 • EXC1755 • EXC1756 • EXC1757 • EXC1758 • EXC1759 • EXC1760 • EXC1761 • EXC1762 • EXC1763 • EXC1764 • EXC1765 • EXC1766 • EXC1767 • EXC1768 • EXC1769 • EXC1770 • EXC1771 • EXC1772 • EXC1773 • EXC1774 • EXC1775 • EXC1776 • EXC1777 • EXC1778 • EXC1779 • EXC1780 • EXC1781 • EXC1782 • EXC1783 • EXC1784 • EXC1785 • EXC1786 • EXC1787 • EXC1788 • EXC1789 • EXC1790 • EXC1791 • EXC1792 • EXC1793 • EXC1794 • EXC1795 • EXC1796 • EXC1797 • EXC1798 • EXC1799 • EXC1800 • EXC1801 • EXC1802 • EXC1803 • EXC1804 • EXC1805 • EXC1806 • EXC1807 • EXC1808 • EXC1809 • EXC1810 • EXC1811 • EXC1812 • EXC1813 • EXC1814 • EXC1815 • EXC1816 • EXC1817 • EXC1818 • EXC1819 • EXC1820 • EXC1821 • EXC1822 • EXC1823 • EXC1824 • EXC1825 • EXC1826 • EXC1827 • EXC1828 • EXC1829 • EXC1830 • EXC1831 • EXC1832 • EXC1833 • EXC1834 • EXC1835 • EXC1836 • EXC1837 • EXC1838 • EXC1839 • EXC1840 • EXC1841 • EXC1842 • EXC1843 • EXC1844 • EXC1845 • EXC1846 • EXC1847 • EXC1848 • EXC1849 • EXC1850 • EXC1851 • EXC1852 • EXC1853 • EXC1854 • EXC1855 • EXC1856 • EXC1857 • EXC1858 • EXC1859 • EXC1860 • EXC1861 • EXC1862 • EXC1863 • EXC1864 • EXC1865 • EXC1866 • EXC1867 • EXC1868 • EXC1869 • EXC1870 • EXC1871 • EXC187	

ELENCO TIPOLOGICO PROFILATI:

- Colonne tipo HEA180
  - Travi di sostegno tipo HEA160;
  - Cuscini tipo UPN160x80;
  - Supporti pioniercoltati tipo UPN140 e Angolare 40x60x5;
  - Gradini e Pianeletti in griglia tipo "Onorati" antiriscio, maglia 15x76, piatto 25x2;
  - Parapetti dell'altezza di cm 110, verificati in tests per uno spinto di 2,00 kN/m, costituiti da montanti in profilati quadrati 40x40 mm, corrimano in profilati quadrati 40x2 mm, scolare intermedio 40x2 mm, fermapiè in min, piatto 90x3 mm posto a 10 mm dai cuscini;
  - bulloneria ad alta resistenza CLASSE 8.8 UNI 3740-74.
1. Larghezza rampe cm 120;
  2. Pendenza profondità cm 30;
  3. Altezza altezza medio cm 17;

1. Larghezza rampe cm 120;
2. Pedate profondità cm 30;
3. Alzate altezza media cm 17

COMUNE DI SANTA GIUSTA PROVINCIA DI ORISTANO																								
<b>PROGETTO:</b>  RIORDINO DELLE MISURE DI PREVENZIONE INCENDI DEL PASTIFICIO F.LLI CELLINO S.p.A., SITO NELL'AREA PORTUALE DI ORISTANO IN LOCALITA' CIRRAS NEL COMUNE DI SANTA GIUSTA (OR) <b>VARIANTE ALL'AUTORIZZAZIONE UNICA N.322 DEL 28/11/2024</b> <i>Pratica Autorizzativa</i>																								
<b>OGGETTO:</b>  <b>SITUAZIONE DI PROGETTO "AUTORIZZATO" INVARIATO PASTIFICIO SPOGLIATOI PIANO 1° e PIANO 2° MAGAZZINO MOVECO</b>																								
<b>COMMITTENTE:</b>  <b>PASTIFICIO F.LLI CELLINO S.p.A.</b> <i>Porto Industriale di Oristano, Località Cirras - 09096 Santa Giusta (OR)</i>																								
		<b>ELABORATO</b>  <b>Tav.09</b>																						
		<b>SCALA</b>  1:100																						
		<b>DATA</b>  Luglio 2025																						
		<table border="1"><thead><tr><th>REV.</th><th>DATA</th><th>COMMENTO</th></tr></thead><tbody><tr><td>REV.01</td><td>10.07.2025</td><td>PRIMA EMISSIONE</td></tr><tr><td> </td><td> </td><td> </td></tr><tr><td> </td><td> </td><td> </td></tr><tr><td> </td><td> </td><td> </td></tr><tr><td> </td><td> </td><td> </td></tr><tr><td> </td><td> </td><td> </td></tr></tbody></table>		REV.	DATA	COMMENTO	REV.01	10.07.2025	PRIMA EMISSIONE															
REV.	DATA	COMMENTO																						
REV.01	10.07.2025	PRIMA EMISSIONE																						
<b>COD. DOCUMENTO:</b> n° 02/PASTIFICIO/CIRRAS/Autorizzazione Riforma Pastificio, Sanrucco (CI Area), 28/11/2024 (Fg. 49)																								
<b>IL PROGETTISTA</b> Ing. Valerio Manca <b>COLLABORATORI</b> Ing. Tonio Demelas Geom. Pierluigi Onis		<b>IL COMMITTENTE</b> <b>PASTIFICIO F.LLI CELLINO S.p.A.</b> <i>Il Legale Rappresentante</i>																						